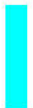












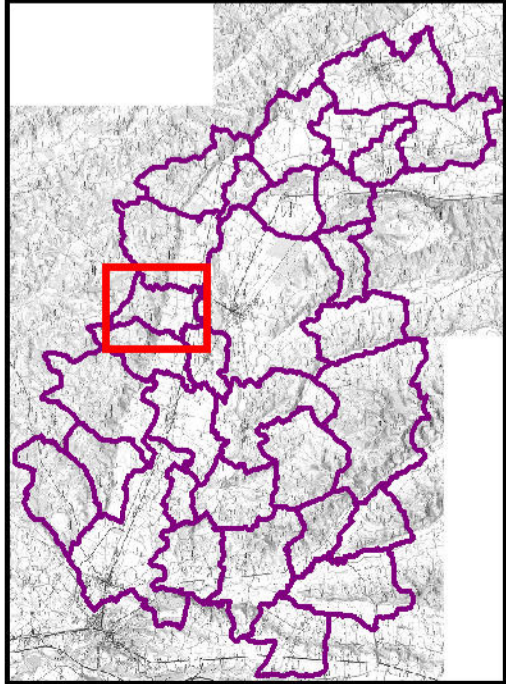


Légende :

- |   |                                       |   |   |
|---|---------------------------------------|---|---|
|  | Lit ordinaire                         |  | Encaissant (limite extrême des crues historiques) |
|  | Crue très fréquente (d'ordre annuel)  |  | de pente abrupte                                  |
|  | Crue fréquente (retour de 5 à 15 ans) |  | de pente faible                                   |
|  | Crue exceptionnelle                   |  | Chenal de crue                                    |
|  | Plan d'eau                            |  | Repère de crue                                    |
|  | Digue du plan d'eau                   |  | Digue   |
|   |                                       |  | Remblai   |

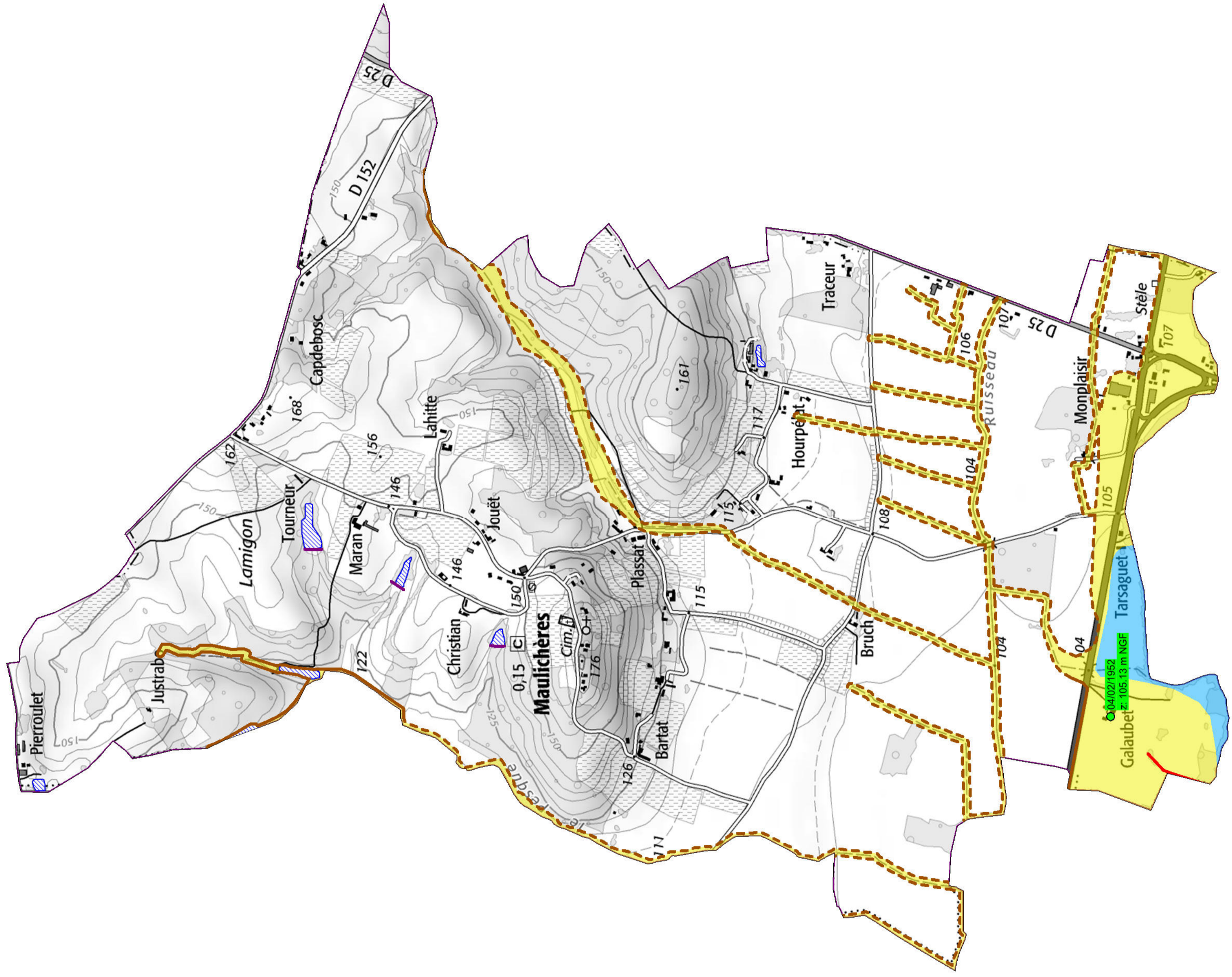
Plan de Situation



Vue d'ensemble



Echelle: 1/10 000



INDICE	DATE	D	C	MODIFICATION
A	05/2017	GCe	LBh	Carte initiale
B	09/2017	GCe	LBh	Intégration remarques DDT32
C	12/2017	GLs	LBh	Reprises locales
D	01/2018	GCe	LBh	Reprises à proximité d'enjeux
Etabli et contrôlé		Contrôlé et proposé		
Le 01/18	Par	LBH	Le	Par