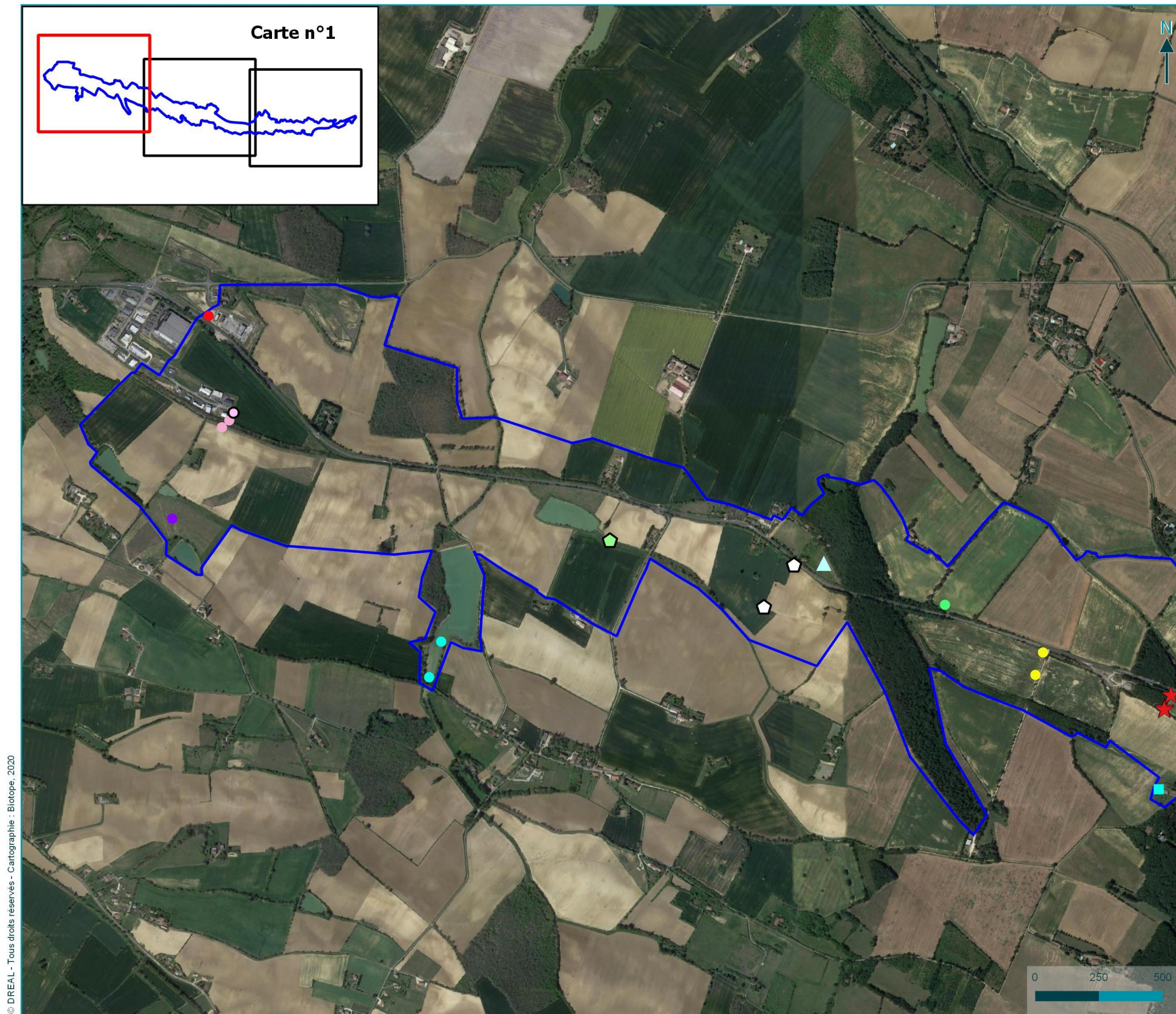


Espèces végétales

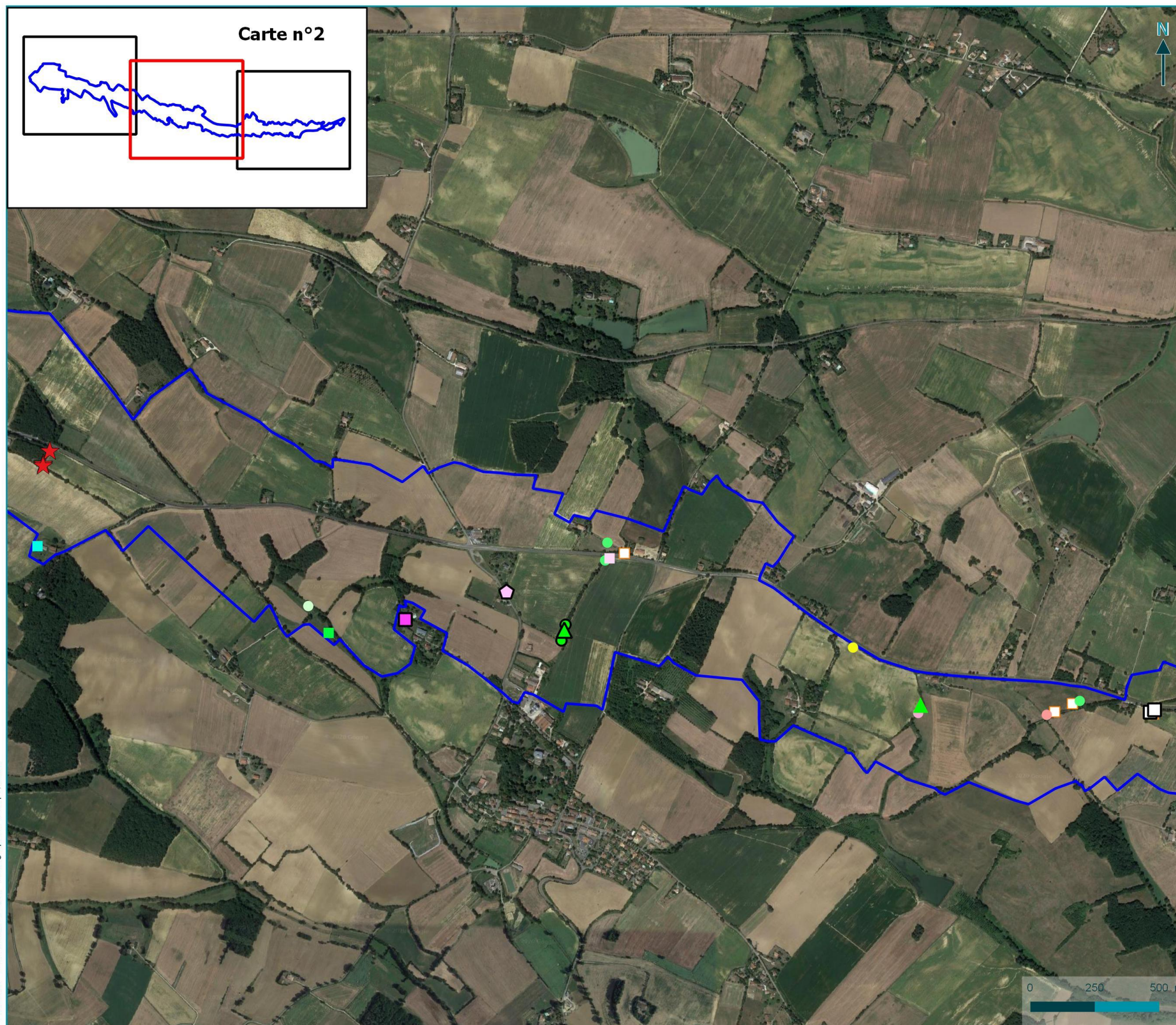
Localisation des espèces végétales patrimoniales

RN124 Déviation Gimont l'Isle Jourdain



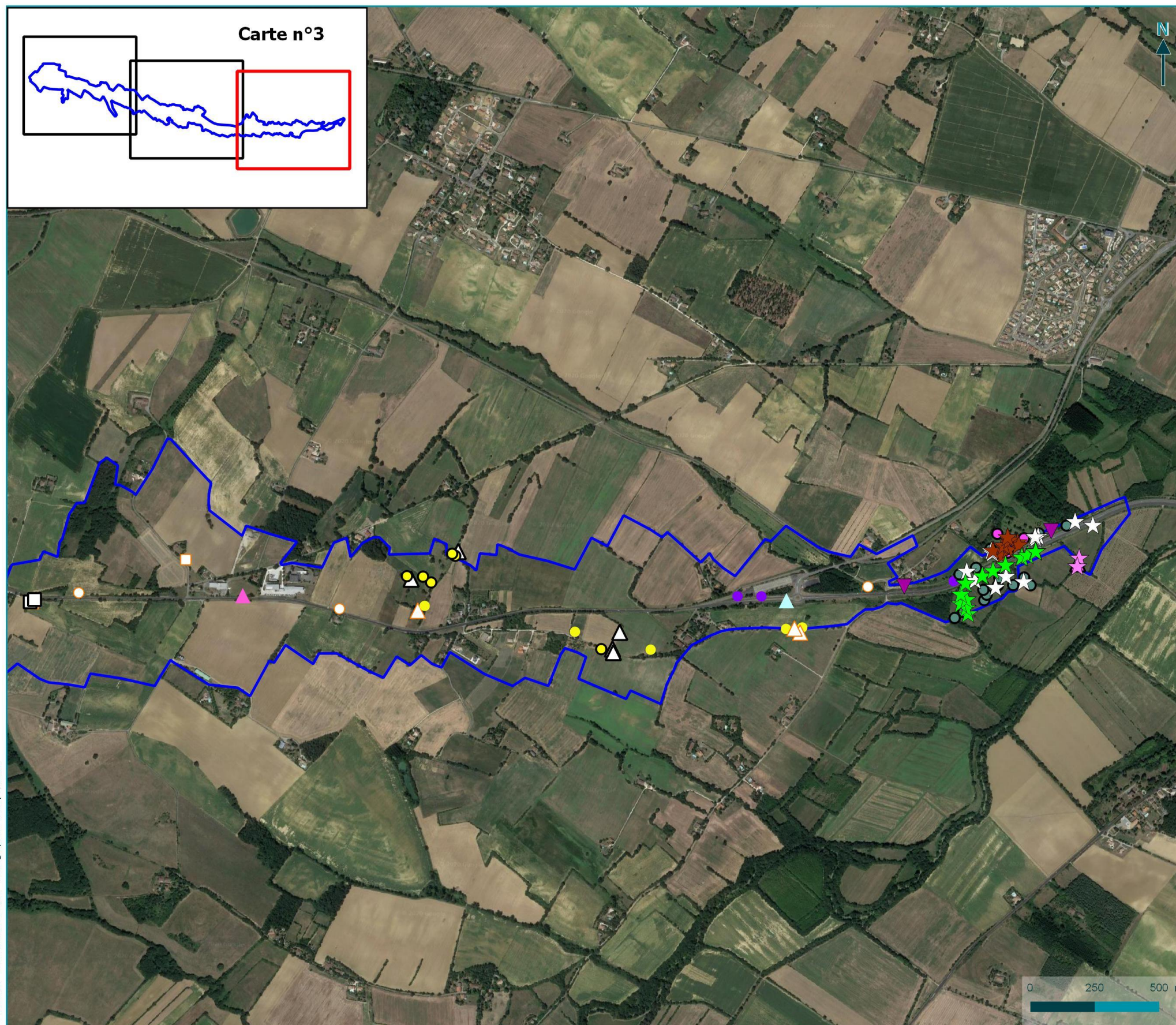
Localisation des espèces végétales patrimoniales

RN124 Déviation Gimont l'Isle Jourdain








Localisation des espèces végétales patrimoniales

RN124 Déviation Gimont l'Isle Jourdain



 Périmètre d'étude

Espèces protégées observées entre 2018 et 2020

-  *Bellevalia romana*
-  *Eleocharis uniglumis*
-  *Nigella hispanica*
-  *Trifolium squamosum*
-  *Veronica scutellata*















Espèces menacées observées entre 2018 et 2020

-  *Tragopogon porrifolius* L.

Autres espèces patrimoniales observées entre 2018 et 2020

-  *Carduus pycnocephalus*
-  *Carex tomentosa*
-  *Colchicum autumnale*
-  *Cota altissima*
-  *Euphorbia falcata*
-  *Gastridium ventricosum*
-  *Lathyrus nissolia*
-  *Persicaria amphibia*
-  *Petroselinum segetum*
-  *Phalaris paradoxa*
-  *Samolus valerandi*
-  *Scandix pecten-veneris*
-  *Stachys annua*

Espèces patrimoniales observées en 2013

-  *Adonis annua*
-  *Ammi majus*
-  *Anthemis altissima* (= *Cota altissima*)
-  *Echium plantagineum*
-  *Euphorbia falcata*
-  *Gastridium ventricosum*
-  *Groenlandia densa*
-  *Lathyrus nissolia*
-  *Nigella gallica* (= *N. hispanica*)
-  *Persicaria amphibia*
-  *Petroselinum segetum*
-  *Phalaris paradoxa*
-  *Potamogeton berchtoldii/pusillus*
-  *Ranunculus aquatilis*
-  *Scandix pecten-veneris*
-  *Thymelaea passerina*
-  *Tragopogon porrifolius*
-  *Valerianella eriocarpa*
-  *Valerianella ramosa*
-  *Zannichellia palustris*



Légende thématique "Localisation des espèces végétales patrimoniales"

RN124 Déviation Gimont l'Isle Jourdain